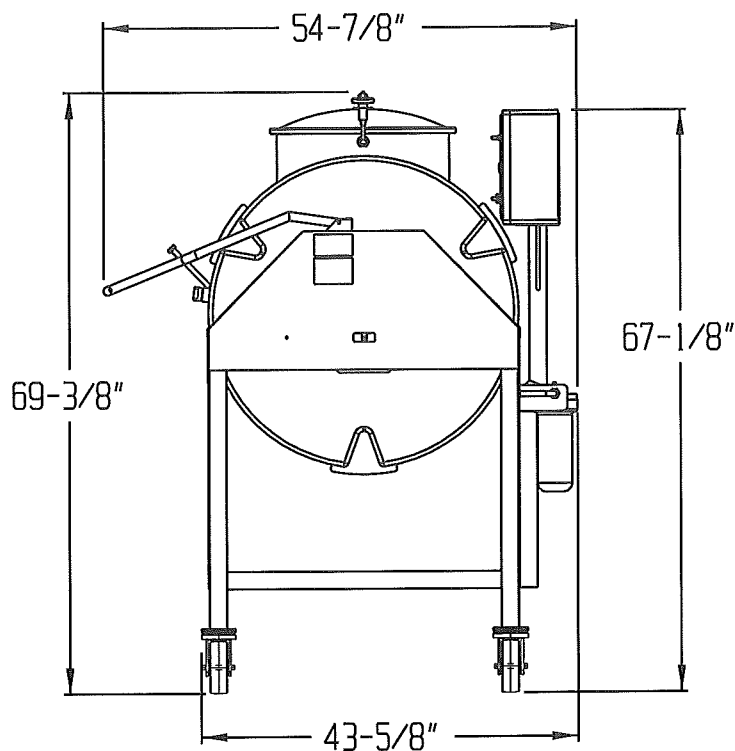
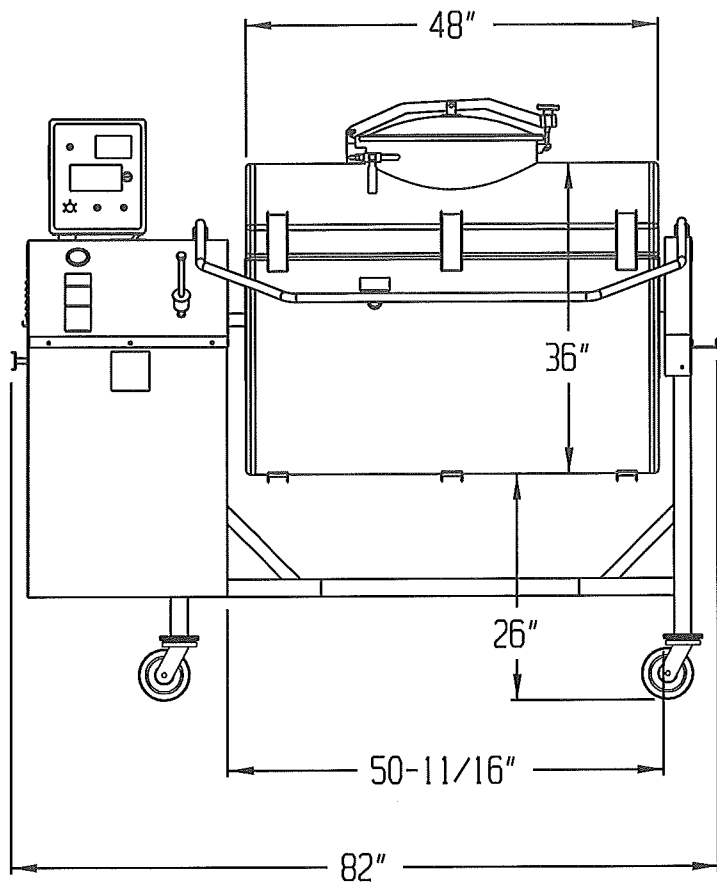


DANIELS FOOD EQUIPMENT

DVTS 1000 DD TUMBLER



SPECIFICATIONS

| | |
|-----------------------------|---|
| TOTAL POWER INPUT: | STANDARD; 208/230 VOLT, 15.6 AMP, 3 PHASE 60 HZ |
| TUMBLER DRIVE: | VARIABLE SPEED 4-12.2 RPM, FWD/OFF/REV |
| DRIVE MOTOR: | 3 HP |
| VACUUM PUMP: | ¼ HP |
| TOUCH SCREEN TIMER: | HOURS, MINUTES, BATCH COUNTING |
| ELECTRONIC CONTROLS: | TUMBLER SPEED-ADJUSTABLE 4-12.2 RPM. "JOG"- "RUN" TOGGLE SWITCH, FWD/OFF/REV TOGGLE SWITCH, TUMBLER "START"- "STOP" TOGGLE SWITCH, VACUUM PUMP "START"- "STOP" TOGGLE SWITCH |
| MAXIMUM CAPACITY: | 1400-LBS. |
| WEIGHT: | 951-LBS. (NET) |
| SHIPPING WEIGHT: | APPROXIMATELY 1,100 LBS. |

MMYB Inc. dba

DANIELS FOOD EQUIPMENT

310 NORTH CLAYBORN AVE. PARKERS PRAIRIE, MN. 56361 PHONE: (218) 338-5000 FAX (218) 338-5909.

WEB: www.danielsfood.com

E-MAIL: danielsfood@midwestinfo.net

7/19/2016