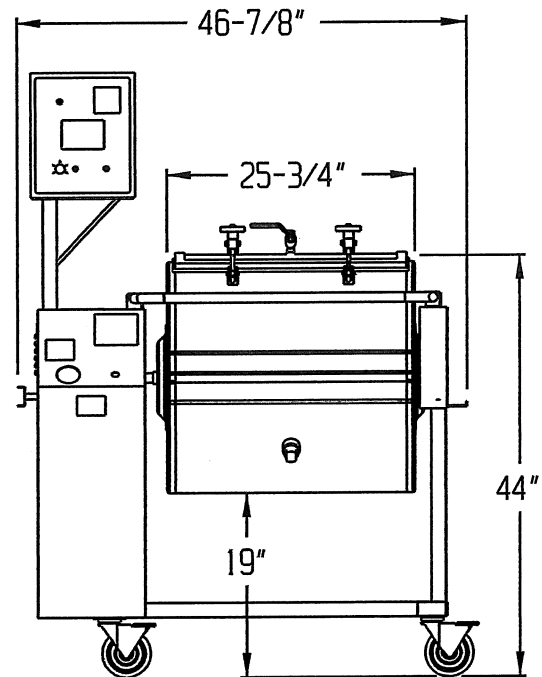
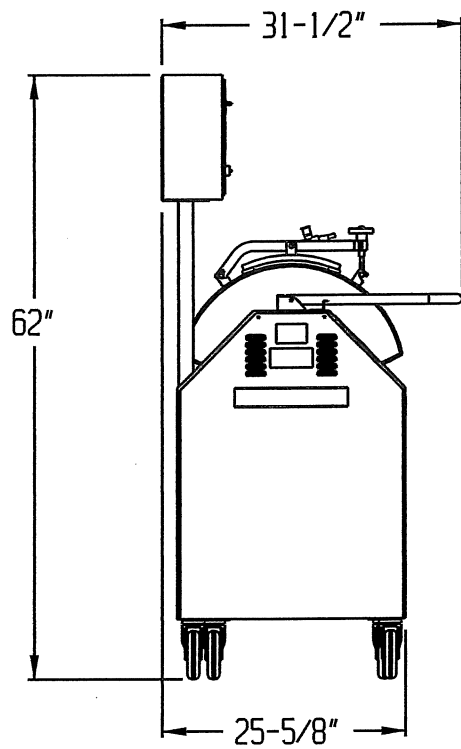


DANIELS FOOD EQUIPMENT

DVTS 200 TUMBLER



SPECIFICATIONS

TOTAL POWER INPUT:	15 AMP, 115 VOLT, 60 Hz CIRCUIT, 1 PHASE, 12.5 AMP NEEDED
TUMBLER DRIVE DC:	VARIABLE SPEED CONTROL, FWD/OFF/REV, 1/2 HP, DC
VACUUM PUMP:	1/4 HP 115 VOLT, 60 Hz, 1 PHASE
TIMER:	SX 160 DIGITAL TIMER, HOURS, MINUTES
ELECTRONIC CONTROLS:	TUMBLER SPEED-ADJUSTABLE 0-15 RPM, TUMBLER "JOG"- "RUN" TOGGLE SWITCH, TUMBLER "FWD"- "REV" TOGGLE SWITCH, TUMBLER "START"- "STOP" TOGGLE SWITCH, VACUUM PUMP "START"- "STOP" TOGGLE SWITCH
MAXIMUM CAPACITY:	250-LBS.
WEIGHT:	360-LBS. (NET)
OPTIONAL POWER:	220 VOLT, 60Hz, 1 PHASE, 6.3 AMP 220 VOLT, 50Hz, 1 PHASE, 6.3 AMP 380 VOLT, 50 Hz, 1 PHASE, 4.2 AMP
OVER-ALL DIMENSIONS:	46-7/8" LONG X 31-1/2" WIDE X 62" TALL

DANIELS FOOD EQUIPMENT

310 NORTH CLAYBORN AVE. PARKERS PRAIRIE, MN. 56361 PHONE: (218) 338-5000 FAX (218) 338-5909.

WEB: www.danielsfood.com

E-MAIL: danielsfood@midwestinfo.net