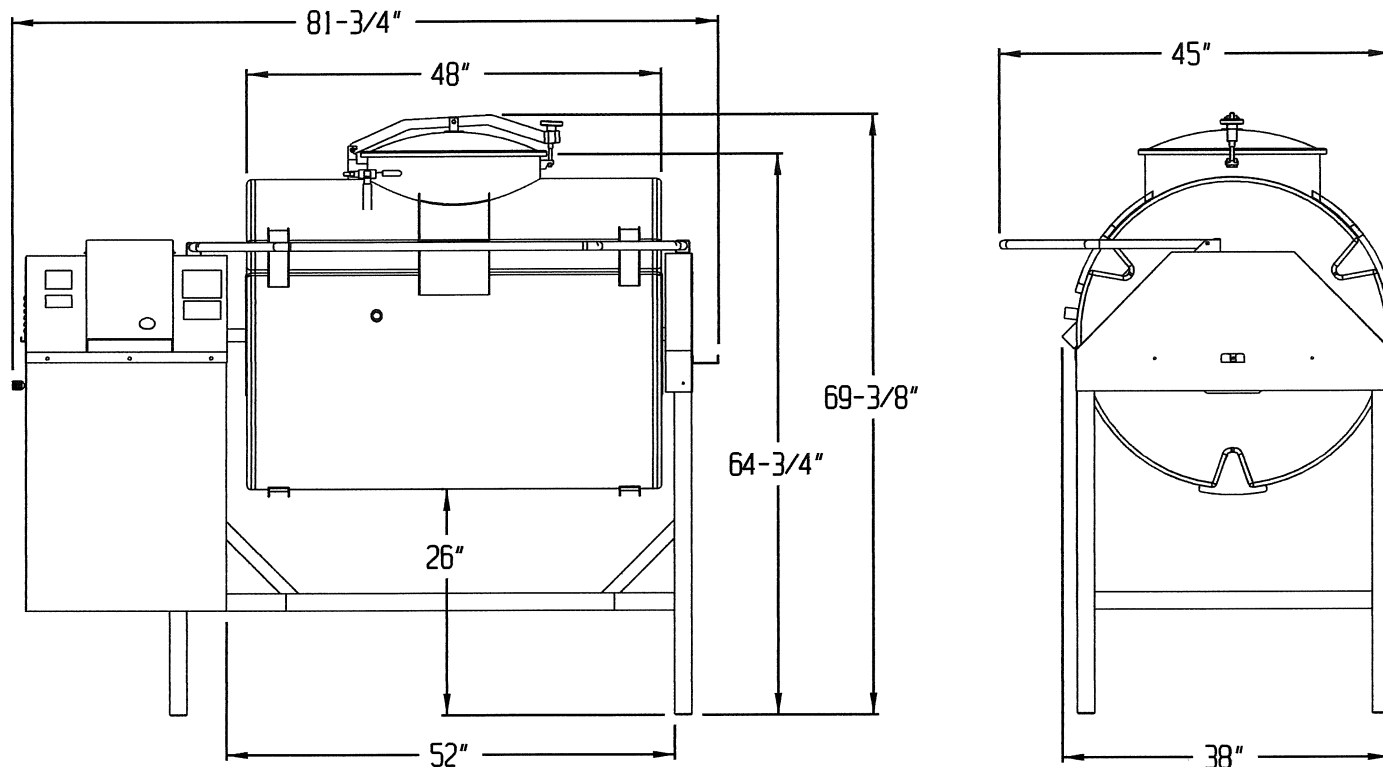


# DANIELS FOOD EQUIPMENT

## DVTS 1000 TUMBLER



### SPECIFICATIONS

<b>TOTAL POWER INPUT:</b>	208/230/460 VOLT, 13.7/12.6/6.3 AMPS, 60HZ, 5HP, 3PH
<b>TUMBLER DRIVE:</b>	VARIABLE SPEED CONTROL, FWD/OFF/REV
<b>DRIVE MOTOR:</b>	HYDRAULIC DRIVE
<b>VACUUM PUMP:</b>	3/4 HP, 1 PHASE, 60 HZ, 4.8 AMPS
<b>TIMER:</b>	DIGITAL TIMER - HOURS, MINUTES
<b>ELECTRONIC CONTROLS:</b>	TUMBLER "START"- "STOP", VACUUM "ON"- "OFF", TIMER "ON"- "OFF" TOGGLE SWITCH
<b>MAXIMUM CAPACITY:</b>	1400-LBS.
<b>WEIGHT:</b>	1000-LBS. (NET)

### DANIELS FOOD EQUIPMENT

310 NORTH CLAYBORN AVE. PARKERS PRAIRIE, MN. 56361 PHONE: (218) 338-5000 FAX (218) 338-5909.

WEB: [www.danielsfood.com](http://www.danielsfood.com)

E-MAIL: [danielsfood@midwestinfo.net](mailto:danielsfood@midwestinfo.net)